

FitCheck Solo™

The perfect tool for putting your hearing loss prevention program into focus

For more information on FitCheck Solo™ please contact us

Custom Protect Ear



681 - 7789 134th Street
Surrey, BC V3W 9E9 Canada

Phone: 604.599.1311 Ext. 321
Toll-free: 1.800.520.0220 Ext. 321
Fax: 604.599.7377
Email: hear@protectear.com

Distributed in the USA by

ProtectEar USA

Toll-free: 1.800.520.0220 Ext. 310
Email: hearus@protectear.com



Custom Protect Ear



Developed by NIOSH and distributed by CPE, FitCheck Solo™ is fast, accurate and simple

How simple? Training and fit testing takes less than 10 minutes and it can be done right on the line*. Ease-of-use and real-time testing are what make FitCheck Solo™ the best fit testing system money can buy. What can you use the system for?

- ✓ **Check attenuation to find the right earplugs** – FitCheck Solo™ will measure any earplug from any source. No additional special devices are needed. Just the same earplugs they now use or even ones they are considering using.
- ✓ **Train your associates to better fit their protection** – repeated fitting of an earplug with feedback and instruction in between will give them the skills, confidence and knowhow to achieve the attenuation they need.
- ✓ **Use it as a teaching tool** – when you are trying to change habits and attitudes, nothing is more persuasive than being able to see the results.
- ✓ **Conduct more frequent testing** – any associate can check their personal attenuation rating (PAR) any time you want to let them.

Of all the options, this is the easiest way to know how much protection they have

FitCheck Solo™ helps take the guesswork out of matching the correct hearing protection with known noise exposure

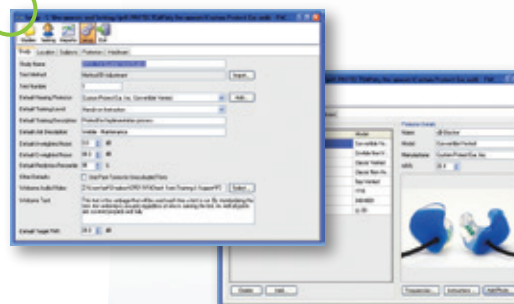
It's the only system that can test the actual plug a person is wearing without having them first remove them. That's what makes it the most accurate system currently available¹. What do you get with FitCheck Solo™?

Proprietary FitCheck Solo™ Software Program

Based on the HPD Well-Fit System developed by and licensed from CDC/NIOSH² and refined by Michael and Associates, FitCheck Solo™ is tested to be the most accurate system currently available for field attenuation measurement³. It is also the only system that can measure any earplug with the actual plug worn the way it was fit that day.

Audiometric Circumaural Tuned Headset

Designed for the original FitCheck system and tested and improved over the last 20 years. This speaks directly to the dependability and durability of this over-ear headset.



Product Training and Support

One year online training and telephone support is included as a part of every FitCheck Solo™ system when purchased through CPE.

Scroll Wheel Bluetooth Mouse

This is the signaling device for the system. Simply scroll the wheel and click at the appropriate points during the testing.



All of this and it is very competitively priced

*FitCheck Solo™ is a portable system that can be operated anywhere that the noise floor does not exceed that of a quiet office environment. ¹Based on a comparative study conducted at three laboratories under the auspices of The National Institute of Occupational Safety and Health. ²The National Institute of Occupational Safety and Health, a division of the U.S. Centre for Disease Control (CDC). ³Based on research conducted at three U.S. Acoustics Laboratories under the auspices of NIOSH.

Custom Protect Ear

